



BoxTone for Good

Mobile Device Management

BoxTone for Good: Mobile Device Management (MDM) lets your mobile employees easily access corporate information on nearly all smartphones and tablets. And only BoxTone for Good: MDM empowers all of IT with role-based automation to deliver mobile services securely and reliably—resulting in full visibility and control of all app data.

This solution is part of the BoxTone for Good: Automated Enterprise Mobility Management (EMM) platform, and is powered by the industry's only real-time automation engine.

Automated mobility dashboards and reports. Gain real-time visibility into mobile service status and security posture across your entire mobile deployment. Centralized data collection, a mobility database, analytics, and pre-built reports ensure accurate historical tracking for audit and activity control.

Automated policy management. Extend your existing enterprise group policy to mobile in Active Directory (AD), without having to manually load users or recreate your org structure in a new, isolated stovepipe. Define your policy settings once; the solution then pushes all settings to devices in real-time, with no user-by-user touch. BoxTone for Good dynamically detects any future use or policy AD changes, then auto-updates the device.

Automated configuration and change management. Set device configuration based on AD Group Policy, auto-update based on policy changes, and auto-wipe data /remove config when user is deactivated in AD.

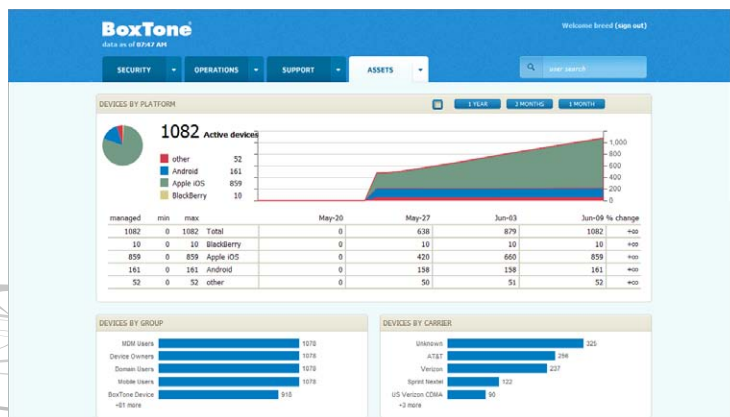
Automated compliance management. Ensure that the IT policies, configurations, and security settings that you apply stay enforced at all times. BoxTone for Good: MDM integrates with your Good for Enterprise deployment, using real-time jailbreak and root detection data from your GFE-provisioned devices.

Automated app management. Leverage the included Enterprise App Catalog so you can auto-deploy, update, and wipe custom and commercial mobile apps based on AD Group Policy. In real-time, the solution blocks/wipes apps and data access in response to violations or device retirement.

Automated support management. Empower your service desk to instantly look up real-time mobile user status, auto-diagnose and auto-repair issues leveraging an embedded best-practice knowledge base, and implement 1-Click Fix-It.

Universal EMM platform. Only the BoxTone for Good EMM platform empowers all IT roles, and integrates with existing process and technology in real-time to ensure highest reliability and scalability at lowest risk.

- Empower mobile users, while maintaining secure & reliable control across all devices and apps
- Efficiently manage the full mobile lifecycle by automating workflow across all IT roles
- Ensure real-time visibility to security posture and performance across entire mobile deployment
- Empower service desk with automated support diagnostics & 1-Click Fix-It to resolve mobile issues fast
- Minimize risk & eliminate security gaps through automation & integration with existing IT systems
- Rapidly scale, while minimizing risk and cost

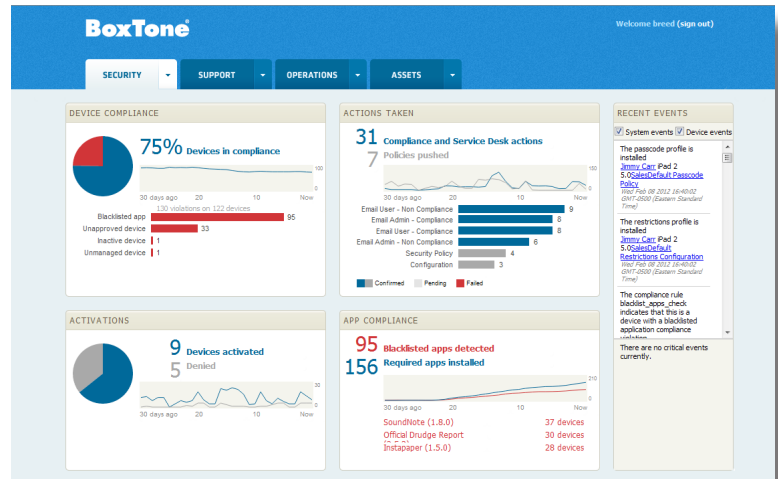


BoxTone for Good

Mobile Device Management

Full lifecycle MDM advantage

- Full lifecycle EMM across security, support, and operations roles to ensure mobile success at lowest cost and risk
- Complete security of all data on-device and Over the Air (OTA), integrated with existing enterprise security and policy systems, including Active Directory
- Centralized control of policy and configuration with automated changed management
- Continuous monitoring of real-time policy compliance with automated enforcement, alerting, and auditing
- Real-time automation throughout the platform eliminates manual troubleshooting, security risk, and gaps from manual error and delayed response
- Direct, real-time integration with existing systems and AD; eliminates risks and gaps from isolated stovepipes
- Rich mobile analytics and database for real-time visibility, as well as historical reporting and audits



Only BoxTone for Good: MDM delivers real-time, full lifecycle MDM

Provision Employee

- On device, new employee enrolls OTA via URL
- Automatically authenticates user via AD credentials
- Automatically checks user permissions and verifies device compliance
- Automatically provisions device OTA according to user's AD Group Policy
- Automatically updates user's apps to match AD Group
- Automatically records all activity for Audit
- No manual IT action to preload or preconfigure each user

Update AD Policy

- IT updates central AD Group Policy, such as allowing new rights or change in location
- Automatically detects changes to existing AD Group Policy
- Automatically ensures that device meets IT spec based on updated AD Group Policy
- Automatically pushes updated OTA policy & config changes due to updated AD Group Policy
- Automatically updates users' apps to match updated AD Group Policy
- Automatically records all activity for Audit

Support Employee

- Mobile user with Issue calls support for assistance
- Service Desk looks up user and sees instant real-time end-to-end status
- Automatically diagnose issue(s) based on sophisticated analytics
- Simple step-by-step instructions via Embedded Knowledgebase of best practice expertise
- Auto-fixes key issues remotely OTA with 1-Click Fix-It
- Automatically records all activity for Audit

Promote Employee

- HR & IT enter promotion in HR system/Active Directory
- Automatically detects employee promotion in AD and related changes to AD Group Policy
- Automatically ensures that device meets IT spec associated with new AD Group membership
- Automatically pushes OTA policy & config changes due to new AD Group
- Automatically updates user's apps to match new AD Group
- Automatically records all activity for Audit
- No manual IT action to find update or update device

Retire Employee

- HR & IT mark employee retirement in HR system/AD
- Automatically detects employee has been removed or deactivated in AD
- Automatically removes OTA corporate data & config but preserves personal data
- Automatically quarantines access from backend corporate systems & data
- Automatically quarantines access or selectively wipes user's apps
- Automated wipe verification provides compliance audit trail

About Good Technology

Good Technology is on a mission to create a world where mobile device users can travel freely, access web servers, exchange files and messages, engage with applications, collaborate with others, and never put sensitive personal or business data at risk. We're building the industry's best platform for mobile security because we see a digital world where important information can go anywhere securely.

Joining us in this vision are thousands of enterprise customers in 90+ countries. They are Fortune 100 leaders in financial services, healthcare, retail, telecommunications, manufacturing, legal, and government agencies. They are leading device manufacturers (including Apple, LG, HTC, Microsoft, and Nokia), leading systems integrators, global carriers worldwide.

Good Technology 430 N. Mary Avenue, Suite 200, Sunnyvale, CA 94085-1.866.7BE.GOOD good.com

©2012 Good Technology Corporation and its related entities. All rights reserved. Good, Good Technology, the Good logo, Good for Enterprise, Good for You, Good Dynamics, Secured by Good, Good Connect, Good Mobile Manager, Good Share and Good Dynamics AppKinetics are trademarks of Good Technology Corporation and its related entities. All third-party trademarks, trade names, or service marks may be claimed as the property of their respective owners. Good's products and technology are protected by U.S. patents and various other foreign patents. Other patents pending.

good.com

